

plas-aid®

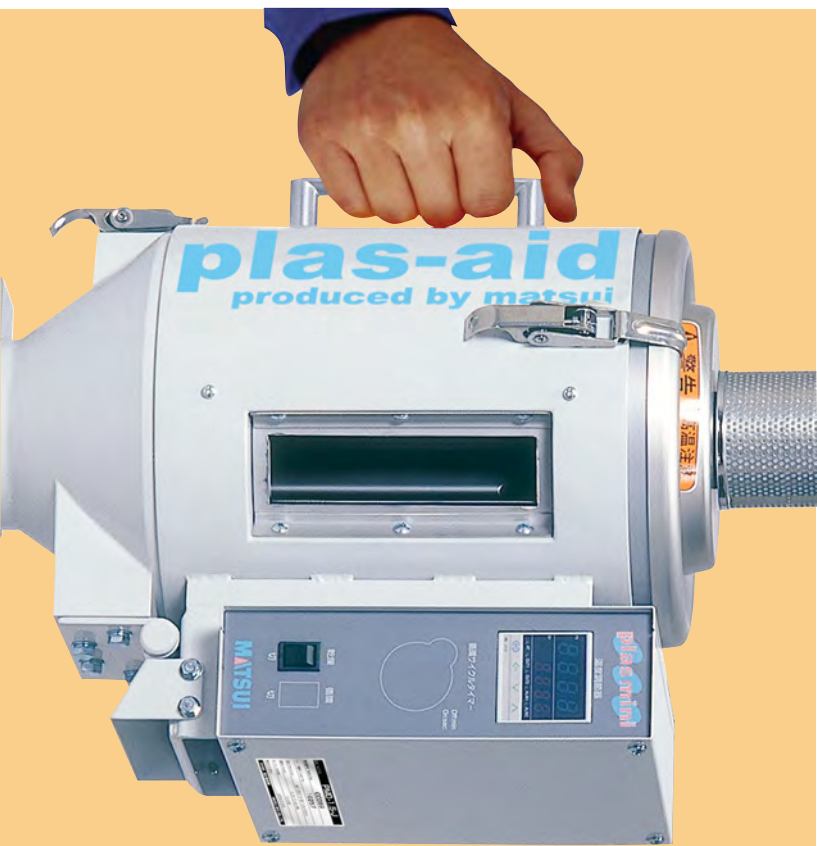
The reliable choice in portable dehumidifying dryers.

performance

precision

quality

plasmini® series



Introducing the **PMD**
 "plasmini[®]" Dryer for micro
 molding applications.

Only from Matsui.

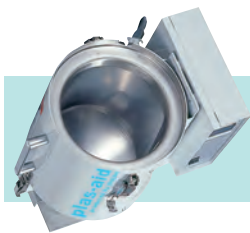
plasmini[®] series

Take a look at what the new "plasmini[®]" offers:

packed with performance

The new "plasmini[®]" Dryer (PMD) is designed specifically for micro-molding applications where molding machines use less than 5-Lbs/Hr, making even the smallest conventional dryers impractical.

The "plasmini[®]" incorporates Matsui's unique heat transfer technology with air moisture purge to effectively dry resin in small quantities. The "plasmini[®]" is extremely energy efficient, using about 50% that of a conventional hot air dryer. Its insulated hopper hinges open for fast, easy cleaning during material changes.



Stainless steel interior makes cleaning and maintenance easy



Thermal conduction fins efficiently dry resins

specifications

PMD model	1.5	3.0
dry temperature (°f)	320°F at ambient 68°F	
drying method	Thermal conduction w/air purge	
drying heater (w)	270	500
power supply (volts)	AC115	
volume (lbs.)	3.3	6.6
hopper volume (ft3)	0.10	.21
approximate throughput (lbs/hr)	0-2	3-4
power (a)	5	
purge air volume (ft3/min)	.353 - 1.765	
weight (lbs)	33	44
approximate dimensions (inches)	13 x 11 x 23H	13 x 11 x 29H
mounting plate (inches)	4.3 x 4.3 with 1.2 inch throat	
available options	Hopper loader, adjustable level control switch, material recirculation, purge air dryer	



Matsui America
www.matsuiamerica.com

chicago headquarters

5825 Turnberry Drive | Hanover park, IL 60113 | T 847-290-9680 | F 630-980-2269