

# plas-aid

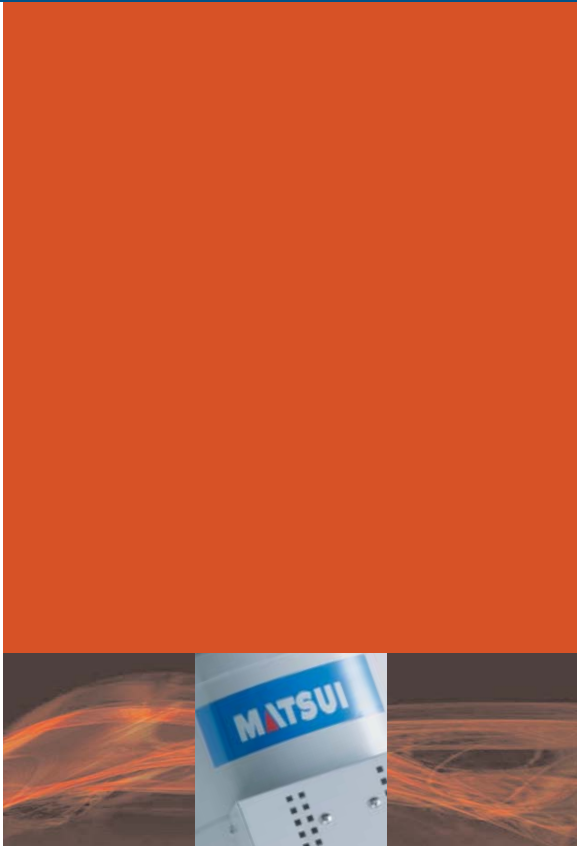
The reliable choice in mold temperature controllers

FULL-FEATURED

ECONOMICAL

PORTABLE

## MC SERIES



Introducing the **MC Series**

Mold Temperature Controller.

Reliable, full-featured unit

in a compact, **portable** design.

Only from Matsui.

## MC SERIES

### Take a look at what the new MC offers

#### PRECISION CONTROL AND ECONOMY

The extremely economical MC Series accurately monitors and maintains temperatures to within 1° of set point, and maintains the optimum production temperature by sampling temperature four times every second. As a result, target temperatures are hit with precision and are accurately maintained cycle after cycle, maximizing your output and minimizing rejects. SPI communication is standard.

#### VIRTUALLY MAINTENANCE FREE

The MC is engineered to last. The heater control uses maintenance-free, solid state relays. And all critical internal components are constructed using stainless steel. You just plug it in and forget it.

#### TOUCHPAD PROGRAMMING

An easy-to-use touchpad simplifies programming, enabling you to preset operations, monitor settings, view progress and make changes effortlessly.

#### ENERGY-SAVING CONSTRUCTION

The unit's precision control software and technologically advanced circuitry, along with an energy efficient, insulated heater tank (A & H models) provide significant energy savings and reduces heater "on" time up to 8%. In addition, heater pump sizes are optimized for performance, minimizing energy consumption.

#### PACKED WITH STANDARD FEATURES

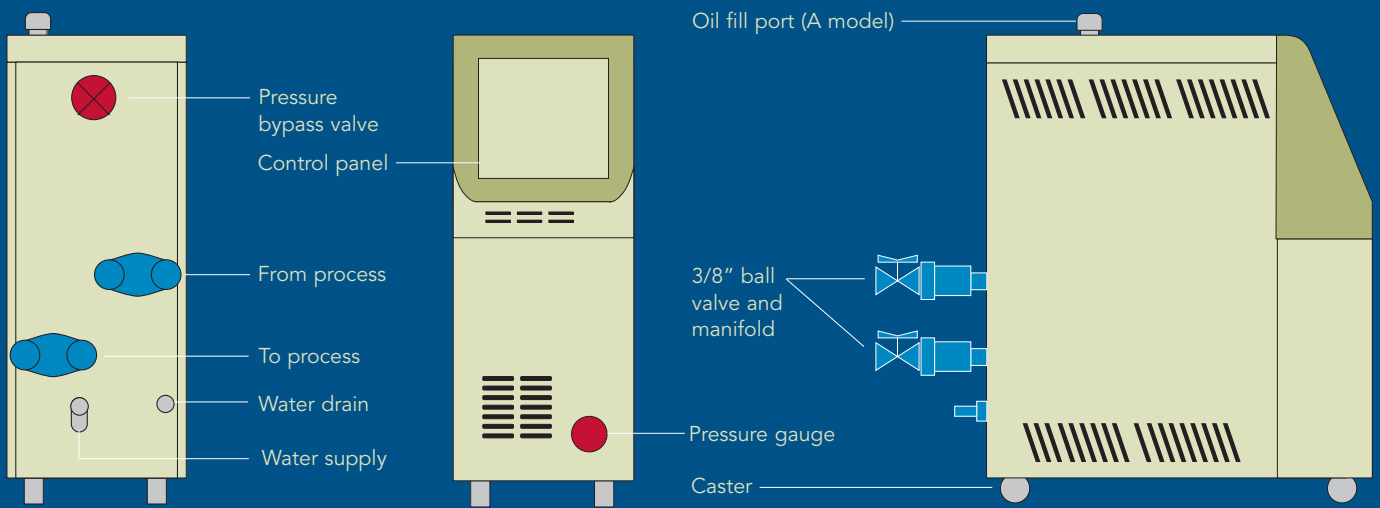
The MC Series comes complete and ready to integrate into production. Units come with 2-way or 4-way manifolds and ball valves, ready to install. In addition, it includes an adjustable pressure bypass valve, allowing you to tailor and optimize performance for different jobs. Even casters are included in this compact unit so it rolls easily into each new production station.



# Consistent temp control for quality part production

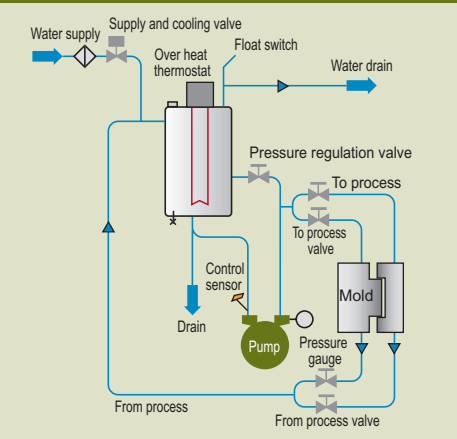
COMPACT PORTABLES FOR EVERY NEED.

## MC mold temperature controller features

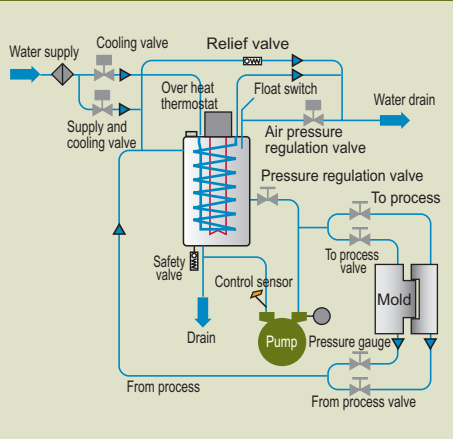


## Flow charts

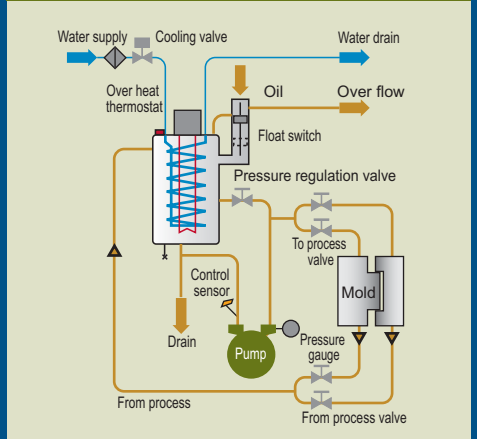
### LOW TEMPERATURE WATER



### HIGH TEMPERATURE WATER



### HIGH TEMPERATURE OIL



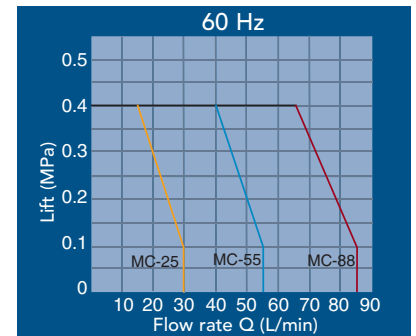
# MC SERIES SPECIFICATIONS

MC MODEL	MCL-25U	MCH-25U	MCA-25U	MCL-55U	MCH-55U	MCA-55U	MCL-88U	MCH-88U	MCA-88U
POWER SUPPLY VOLTAGE	230V or 460V, 3ph 50/60 Hz								
MEDIA*	Water	Water	Oil	Water	Water	Oil	Water	Water	Oil
MAXIMUM TEMPERATURE (°F)	203°F	248°F	320°F	203°F	248°F	320°F	203°F	248°F	320°F
PUMP MOTOR (HP)	0.4			0.8			1.3		
PUMP PERFORMANCE†	Refer to the pump performance curve								
HEATER CAPACITY	3kW			5kW			8kW		
HEATER TANK MATERIAL	Stainless steel (SUS304)								
HEATER TANK CAPACITY (GAL)	0.4	0.9	0.5	1.2	0.7	1.5			
TEMP CONTROLLER CONTROL OPERATION	Heating, Cooling, PID operation								
TEMP CONTROLLER INPUT	K type thermocouple								
TEMP CONTROLLER SETTING/DISPLAY	Digital setting, digital display								
ALARMS INDICATED	Reverse phase, pump overload, sensor abnormal, level low, high temperature, low temperature								
OVERHEAT PROTECTION	Circuit breaker with shunt coil (SHT) + fixed thermostat								
WATER LEVEL DETECTION	Float level switch								
PRESSURE GAUGE	∅ 50 x 1MPa								
PIPING SUPPLY PORT	3/8" Hose Barb + strainer								
PIPING DRAIN PORT	3/8" Hose Barb								
PIPING FEED MEDIUM PORT	Rc (PT) 3/8 B x 2 ball valves			Rc (PT) 3/8 B x 4 ball valves			Rc (PT) 3/8 B x 6 ball valves		
FROM PROCESS PORT	Rc (PT) 3/8 B x 2 ball valves			Rc (PT) 3/8 B x 4 ball valves			Rc (PT) 3/8 B x 6 ball valves		
APPROX. SHIPPING WEIGHT (LBS)	100	100	110	121	121	132	180	180	190
APPROXIMATE DIMENSIONS (INCHES)*	9.1 x 20.6 x 22.8H			9.1 x 20.6 x 22.8H			11.0 x 22.8 x 27.2H		

\*Water to be fresh, soft water

\*\*Outer dimensions do not include piping

**+PUMP PERFORMANCE**



Matsui America

www.matsuiamerica.com

#### CHICAGO HEADQUARTERS

1250 West Lunt Avenue | Elk Grove Village, IL 60007 | T 847-290-9680 | F 847-290-9685

#### LOS ANGELES OFFICE

1240 North Lakeview, Suite 180 | Anaheim, CA 92807 | T 714-693-1101 | F 714-693-1345